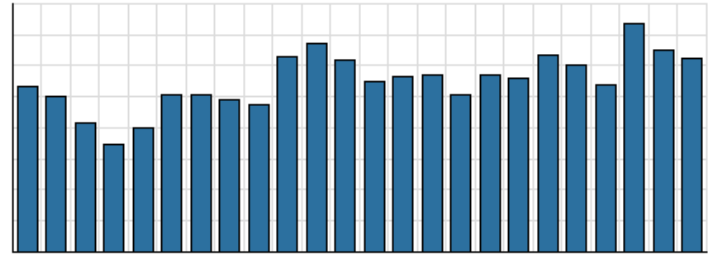


**Monthly Stats Brief Narrative**

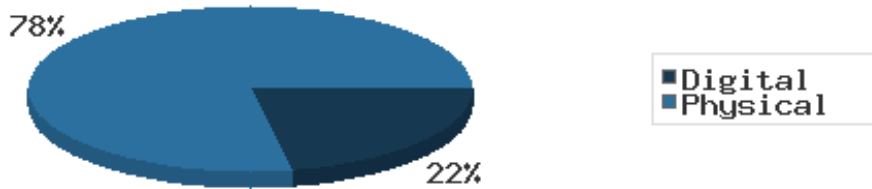
Through August 2022, the number of patrons entering our buildings greatly increased system-wide compared to this same time year-to-date the previous year. Combined physical and digital use of library materials increased year-to-date compared to 2021. About 13% of our registered cardholders checked out a physical item this past month, while about 4% of registered cardholders checked out a digital item.

**District Total Checkouts Over 24 Months**



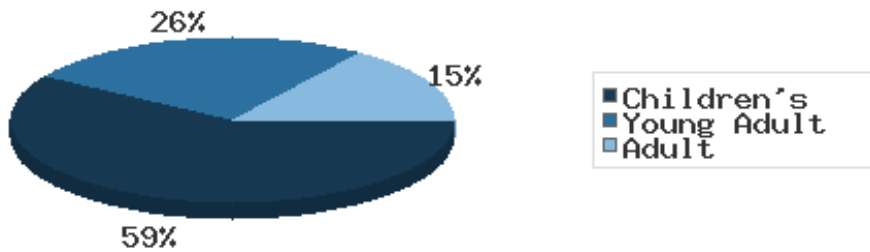
Digital usage has comprised about 22% of total materials use year-to-date through August 2022, and digital usage decreased from this time in 2021.

**Digital vs. Physical Circulation YTD**



In August 2022, BDL patrons saved \$113,311.40 by checking out 9,841 physical items from the library. Our programming for all ages and our digital services further increase the library's value to the community, bringing the total estimated value to \$142,123.52.

**Programs Offered in 2022 YTD**



Compared to this time year-to-date 2021, the number of programs BDL offered has greatly increased. Attendance at programs slightly increased over this same period.

See the full statistical report, starting on the next page, for details and more graphs. The most up-to-date stats are always available online and interactive at <https://www.BranchDistrictLibrary.org/stats>.

## Attendance

August 2022

	BDL Monthly Total	BDL YTD	BDL Year End (Year-over-Year Change)				
			2021	2020	2019	2018	2017
<b>Attendance</b>	10,479	71,142 (+61%)	76,553 (+21%)	63,336 (-66%)	183,677 (-4%)	191,866 (-1%)	193,922 (-4%)
<b>Curbside Service Uses (Tracking since 2020)</b>	3	102	14	0	0	0	0
<b>Hours Open</b>	910.00	7,401.00 (+8%)	10,569.00 (+48%)	7,132.50 (-37%)	11,250.25 (-9%)	12,387.00 (+14%)	10,869.15 (0%)
<b>Number of Hours Scheduled Open Each Week (Tracking Since 1/2018)</b>	241.00		239.00 (+1%)	237.00 (-2%)	241.00 (-2%)	245.00	0.00

## Patrons

August 2022

	BDL Monthly Total	BDL YTD	BDL Year End (Year-over-Year Change)				
			2021	2020	2019	2018	2017
<b>Population in our Service Area (Tracking Since 2018)</b>	46,464	46,276 (avg) (+3%)	44,996 (avg) (+0%)	44,931 (avg) (0%)	45,093 (avg) (0%)	45,113 (avg)	0 (avg)
<b>Library Card Holders</b>	14,680	16,537 (avg) (-25%)	22,337 (avg) (+5%)	21,365 (avg) (+4%)	20,493 (avg) (-4%)	21,350 (avg) (-16%)	25,346 (avg) (+3%)
<b>Patrons Who Checked Out a Physical Item</b>	1,886	1,747 (avg) (+34%)	1,359 (avg) (+23%)	1,102 (avg) (-48%)	2,136 (avg) (-2%)	2,180 (avg) (-5%)	2,305 (avg) (-1%)
<b>New Library Card Holders Added</b>	102	718 (+95%)	732 (-44%)	1,304 (+111%)	618 (-39%)	1,021 (+21%)	844 (-15%)
<b>In-House Holds Filled for Our Library Card Holders</b>	928	6,948 (-7%)	10,696 (+13%)	9,467 (-10%)	10,527 (-4%)	10,987 (-6%)	11,650 (+12%)
<b>Active Hoopla Users</b>	344	309 (avg) (+3%)	291 (avg) (-10%)	322 (avg) (+11%)	290 (avg) (+14%)	255 (avg) (+50%)	170 (avg) (+92%)
<b>Active OverDrive Users</b>	252	248 (avg) (+11%)	223 (avg) (-5%)	234 (avg) (+10%)	213 (avg) (+18%)	180 (avg) (+27%)	143 (avg) (-1%)

## Physical Collection

Tracking Item-Type Breakdown Since 8/2017

August 2022

	BDL Monthly Total	BDL YTD	BDL Year End (Year-over-Year Change)				
			2021	2020	2019	2018	2017
<b>Physical Books and All other Print Materials in the Catalog</b>	93,677		91,417 (+0%)	91,278 (-8%)	98,689 (-2%)	100,253 (0%)	100,293
<b>Physical Audiobooks in the Catalog</b>	1,957		1,875 (-4%)	1,949 (+9%)	1,783 (-5%)	1,881 (+2%)	1,852
<b>Physical Video Materials in the Catalog</b>	12,092		11,646 (+3%)	11,352 (-1%)	11,460 (+8%)	10,579 (+1%)	10,519
<b>Physical Music Recordings in the Catalog</b>	42		42 (-76%)	178 (+12%)	159 (-53%)	337 (-2%)	345
<b>TOTAL Physical Items in the Catalog</b>	<b>107,719</b>		<b>104,980 (0%)</b>	<b>105,257 (-6%)</b>	<b>112,053 (-1%)</b>	<b>113,050 (+0%)</b>	<b>113,009 (-11%)</b>

## Digital Collection

Tracking Since 8/2017

August 2022

	BDL Monthly Total	BDL YTD	BDL Year End (Year-over-Year Change)				
			2021	2020	2019	2018	2017
Ebooks in All Digital Collections	713,852		648,146 (+35%)	480,691 (+30%)	370,666 (+21%)	306,595 (+33%)	230,178
Audiobooks in All Digital Collections	184,059		162,946 (+26%)	128,892 (+50%)	86,004 (+19%)	71,995 (+36%)	52,833
Video Materials in All Digital Collections	24,810		22,520 (+27%)	17,791 (+9%)	16,267 (+14%)	14,229 (-10%)	15,767
Music Recordings in All Digital Collections	332,726		21,347 (-92%)	273,294 (+1%)	271,614 (+13%)	239,705 (-14%)	280,259
Periodicals in All Digital Collections	4,407		3,881 (+6%)	3,668	0	0	0
<b>TOTAL of All Digital Collections</b>	<b>1,259,854</b>		<b>858,840 (-5%)</b>	<b>904,336 (+21%)</b>	<b>744,551 (+18%)</b>	<b>632,524 (+9%)</b>	<b>579,037</b>

## Total Collection

Tracking Since 8/2017

August 2022

	BDL Monthly Total	BDL YTD	BDL Year End (Year-over-Year Change)				
			2021	2020	2019	2018	2017
Combined Physical Items	107,719		104,980 (0%)	105,257 (-6%)	112,053 (-1%)	113,050 (+0%)	113,009 (-11%)
Combined Digital Collections	1,259,854		858,840 (-5%)	904,336 (+21%)	744,551 (+18%)	632,524 (+9%)	579,037
<b>TOTAL of all Collections</b>	<b>1,363,166</b>		<b>959,939 (-5%)</b>	<b>1,009,593 (+18%)</b>	<b>856,604 (+15%)</b>	<b>745,574 (+8%)</b>	<b>692,046 (+447%)</b>

## Use of Physical Items

August 2022

	BDL Monthly Total	BDL YTD	BDL Year End (Year-over-Year Change)				
			2021	2020	2019	2018	2017
Checkouts of Cataloged Items	7,286	56,712 (+27%)	68,460 (+31%)	52,227 (-53%)	110,285 (-3%)	113,128 (-6%)	120,916 (+2%)
Renewals of Cataloged Items	905	7,326 (+31%)	8,639 (+20%)	7,181 (-47%)	13,490 (-1%)	13,607 (-8%)	14,804 (-4%)
Items Used in the Library But Not Checked Out	277	3,252 (+82%)	2,350 (-63%)	6,404 (+54%)	4,166 (+49%)	2,803 (-8%)	3,050 (+126%)
Checkouts of Uncataloged Items	129	729 (-15%)	1,505 (+50%)	1,001 (-70%)	3,294 (-16%)	3,904 (+38%)	2,839 (-38%)
Requests from BDL Patrons for Items at Other MeLCat Libraries, Actually Fulfilled	690	4,515 (-7%)	6,981 (+52%)	4,599 (-53%)	9,873 (+1%)	9,777 (+20%)	8,169 (+15%)
Requests from Other MeLCat Libraries for Items at BDL, Actually Fulfilled	554	4,124 (+13%)	5,712 (+80%)	3,175 (-58%)	7,582 (-23%)	9,810 (+25%)	7,867 (+11%)
<b>TOTAL Use of Physical Items</b>	<b>9,841</b>	<b>76,658 (+25%)</b>	<b>93,647 (+26%)</b>	<b>74,587 (-50%)</b>	<b>148,690 (-3%)</b>	<b>153,029 (-3%)</b>	<b>157,645 (+2%)</b>

## Use of Digital Resources

August 2022

	BDL Monthly Total	BDL YTD	BDL Year End (Year-over-Year Change)				
			2021	2020	2019	2018	2017
OverDrive Checkouts	1,171	9,102 (+4%)	13,294 (+2%)	13,051 (+21%)	10,822 (+14%)	9,501 (+21%)	7,823 (+4%)
Hoopla Checkouts	1,193	8,879 (+4%)	12,507 (-8%)	13,604 (+9%)	12,530 (-2%)	12,796 (+20%)	10,669 (+96%)
All Other Digital Services	298	3,636 (-49%)	10,131 (+42%)	7,140 (-33%)	10,604 (+11%)	9,572 (-72%)	34,047 (-46%)
<b>TOTAL Use of Digital Resources</b>	<b>2,662</b>	<b>21,617 (-13%)</b>	<b>36,284 (+4%)</b>	<b>34,861 (+3%)</b>	<b>33,956 (+7%)</b>	<b>31,869 (-39%)</b>	<b>52,539 (-31%)</b>

## Total Item Usage

August 2022

	BDL Monthly Total	BDL YTD	BDL Year End (Year-over-Year Change)				
			2021	2020	2019	2018	2017
Combined Checkouts of Physical Items	9,841	76,658 (+25%)	93,647 (+26%)	74,587 (-50%)	148,690 (-3%)	153,029 (-3%)	157,645 (+2%)
Combined Use of Digital Resources	2,662	21,617 (-13%)	36,284 (+4%)	34,861 (+3%)	33,956 (+7%)	31,869 (-39%)	52,539 (-31%)
<b>TOTAL Uses of All BDL Items</b>	<b>12,503</b>	<b>98,275 (+14%)</b>	<b>129,931 (+19%)</b>	<b>109,448 (-40%)</b>	<b>182,646 (-1%)</b>	<b>184,898 (-12%)</b>	<b>210,184 (-9%)</b>

## Cataloging

August 2022

	BDL Monthly Total	BDL YTD	BDL Year End (Year-over-Year Change)				
			2021	2020	2019	2018	2017
Physical Items Added to the Catalog	1,008	6,902 (-18%)	11,665 (+17%)	9,938 (+2%)	9,719 (-12%)	11,056 (+0%)	11,009 (-1%)
Physical Items Deleted from the Catalog	822	4,254 (-70%)	16,482 (-3%)	17,003 (+58%)	10,769 (-2%)	10,941 (-55%)	24,366 (+53%)

## Reference Questions

August 2022

	BDL Monthly Total	BDL YTD	BDL Year End (Year-over-Year Change)				
			2021	2020	2019	2018	2017
General Reference Questions in Person	984	6,980 (+33%)	8,431 (+94%)	4,347 (-50%)	8,748 (+32%)	6,641 (-12%)	7,537 (+20%)
Questions via Telephone Calls	535	4,005 (+0%)	5,765 (+26%)	4,559 (+11%)	4,111 (+6%)	3,866 (-24%)	5,079 (+10%)
Reference Questions Delivered Online	31	154 (-27%)	275 (+13%)	243 (-14%)	281 (+85%)	152 (-35%)	233 (-23%)
In-Person Questions on Computer or Internet Use	407	2,563 (+18%)	3,675 (+33%)	2,767 (-63%)	7,505 (+6%)	7,068 (-3%)	7,285 (+11%)
In-Person Questions about Our Online Databases	29	89 (-6%)	142 (+33%)	107 (-69%)	349 (-15%)	409 (+13%)	363 (+114%)
In-Person Tax Form Questions	0	203 (-13%)	233 (-19%)	286 (-12%)	326 (-37%)	518 (+5%)	493 (+4%)
<b>TOTAL of All Reference Questions</b>	<b>1,986</b>	<b>13,994 (+17%)</b>	<b>18,521 (+50%)</b>	<b>12,309 (-42%)</b>	<b>21,320 (+14%)</b>	<b>18,654 (-11%)</b>	<b>20,990 (+14%)</b>

## Notary Services

Began 9/2017

August 2022

	BDL Monthly Total	BDL YTD	BDL Year End (Year-over-Year Change)				
			2021	2020	2019	2018	2017
Patrons Who Used our Free Notary Services	16	82 (+95%)	69 (+50%)	46 (-52%)	95 (+44%)	66 (+371%)	14
Documents Notarized	25	103 (+69%)	112 (+107%)	54 (-56%)	124 (+85%)	67 (+253%)	19

## MeLCat

August 2022

	BDL Monthly Total	BDL YTD	BDL Year End (Year-over-Year Change)				
			2021	2020	2019	2018	2017
Requests from BDL Patrons for Items at Other MeLCat Libraries	718	4,739 (-8%)	7,375 (+47%)	5,026 (-52%)	10,538 (+1%)	10,462 (+20%)	8,699 (+14%)
Requests from BDL Patrons for Items at Other MeLCat Libraries, Actually Fulfilled	690	4,515 (-7%)	6,981 (+52%)	4,599 (-53%)	9,873 (+1%)	9,777 (+20%)	8,169 (+15%)
Requests from Other MeLCat Libraries for Items at BDL	537	4,097 (+4%)	6,067 (+49%)	4,067 (-52%)	8,405 (-18%)	10,296 (+29%)	7,994 (+13%)
Requests from Other MeLCat Libraries for Items at BDL, Actually Fulfilled	554	4,124 (+13%)	5,712 (+80%)	3,175 (-58%)	7,582 (-23%)	9,810 (+25%)	7,867 (+11%)

## Programs Held

August 2022

	BDL Monthly Total	BDL YTD	BDL Year End (Year-over-Year Change)				
			2021	2020	2019	2018	2017
Early Childhood Literacy Programs Held (Tracking since 2021)	0	108 (+66%)	116	0	0	0	0
Juvenile Programs Held	14	306 (+145%)	290 (-47%)	551 (-31%)	804 (+10%)	730 (+1%)	720 (+19%)
Young Adult Programs Held	6	167 (+255%)	131 (-5%)	138 (-55%)	304 (-10%)	338 (+41%)	239 (+47%)
Adult Programs Held	0	75 (+23%)	114 (-56%)	257 (+54%)	167 (+23%)	136 (-7%)	146 (-34%)
All-Ages Programs Held (Tracking since 2021)	5	30 (-30%)	80	0	0	0	0
Early Childhood Literacy Summer Reading Programs Held (Tracking since 2021)	0	41 (+356%)	9	0	0	0	0
Juvenile Summer Reading Events Held	0	141 (+47%)	96	0	173 (+52%)	114 (+20%)	95 (+7%)
Young Adult Summer Reading Events Held	0	27 (+8%)	25	0	61 (+24%)	49 (-14%)	57 (+97%)
Adult Summer Reading Events Held	0	28 (+4%)	27	0	17 (+467%)	3	0
All-Ages Summer Reading Programs Held (Tracking since 2021)	0	19 (-27%)	26	0	0	0	0
Computer Classes Held	0	11 (+1,000%)	1	1 (-99%)	81 (+305%)	20 (-9%)	22 (+57%)
<b>TOTAL of All Programs</b>	<b>25</b>	<b>953 (+82%)</b>	<b>915 (-3%)</b>	<b>947 (-41%)</b>	<b>1,607 (+16%)</b>	<b>1,390 (+9%)</b>	<b>1,279 (+14%)</b>

## Program Attendance

August 2022

	BDL Monthly Total	BDL YTD	BDL Year End (Year-over-Year Change)				
			2021	2020	2019	2018	2017
Attendees at Early Childhood Literacy Programs (Tracking since 2021)	0	923 (-5%)	1,389	0	0	0	0
Attendees at Juvenile Programs	421	3,524 (+48%)	4,270 (-83%)	25,317 (+73%)	14,654 (-7%)	15,725 (+2%)	15,351 (+48%)
Attendees at Young Adult Programs	97	781 (+70%)	817 (-75%)	3,204 (+29%)	2,489 (-23%)	3,218 (-15%)	3,806 (+276%)
Attendees at Adult Programs	0	557 (-64%)	1,971 (-88%)	16,263 (+519%)	2,627 (+33%)	1,970 (0%)	1,979 (-3%)
Attendees at All-Ages Programs (Tracking since 2021)	360	1,014 (-70%)	4,547	0	0	0	0
Attendees at Early Childhood Literacy Summer Reading Programs (Tracking since 2021)	0	424 (+190%)	146	0	0	0	0
Attendees at Juvenile Summer Reading Events	0	3,415 (+90%)	1,798	0	4,186 (+8%)	3,864 (+24%)	3,116 (-20%)
Attendees at Young Adult Summer Reading Events	0	361 (+99%)	181	0	279 (-16%)	333 (-50%)	671 (+127%)
Attendees at Adult Summer Reading Events	0	231 (+29%)	179	0	310 (+265%)	85	0
Attendees at All-Ages Summer Programs (Tracking since 2021)	0	1,226 (+68%)	730	0	0	0	0
Attendees at Computer Classes	0	12 (+1,100%)	1	0	26 (+30%)	20 (-5%)	21 (+75%)
<b>TOTAL of All Program Attendance</b>	<b>878</b>	<b>12,468 (+6%)</b>	<b>16,029 (-64%)</b>	<b>44,784 (+82%)</b>	<b>24,571 (-3%)</b>	<b>25,215 (+1%)</b>	<b>24,944 (+41%)</b>

## Summer Reading Overview

August 2022

	BDL Monthly Total	BDL YTD	BDL Year End (Year-over-Year Change)				
			2021	2020	2019	2018	2017
Juveniles Signed Up for Summer Reading Program	0	527 (+29%)	407 (+347%)	91 (-87%)	711 (-5%)	747 (-35%)	1,153 (+19%)
Young Adults Signed up for Summer Reading Program	0	336 (+336%)	77 (+166%)	29 (-78%)	134 (-65%)	378 (-2%)	385 (+241%)
Adults Signed Up for Summer Reading Program	0	145 (+19%)	122 (+270%)	33 (-79%)	159 (-36%)	248 (+112%)	117 (+36%)
Juveniles who Completed Summer Reading Program	0	355 (+61%)	220 (+142%)	91 (-76%)	385 (+48%)	260 (-50%)	518 (+13%)
Young Adults who Completed Summer Reading Program	0	50 (+32%)	38 (+31%)	29 (-63%)	79 (-41%)	135 (-50%)	268 (+332%)
Adults who Completed Summer Reading Program	0	31 (+3%)	30 (-9%)	33 (-72%)	118 (-28%)	165 (+72%)	96 (+60%)
Juvenile Summer Reading Events Held	0	141 (+47%)	96	0	173 (+52%)	114 (+20%)	95 (+7%)
Young Adult Summer Reading Events Held	0	27 (+8%)	25	0	61 (+24%)	49 (-14%)	57 (+97%)
Adult Summer Reading Events Held	0	28 (+4%)	27	0	17 (+467%)	3	0
Attendees at Juvenile Summer Reading Events	0	3,415 (+90%)	1,798	0	4,186 (+8%)	3,864 (+24%)	3,116 (-20%)
Attendees at Young Adult Summer Reading Events	0	361 (+99%)	181	0	279 (-16%)	333 (-50%)	671 (+127%)
Attendees at Adult Summer Reading Events	0	231 (+29%)	179	0	310 (+265%)	85	0

## Summer Reading Program Signups

August 2022

	BDL Monthly Total	BDL YTD	BDL Year End (Year-over-Year Change)				
			2021	2020	2019	2018	2017
Juveniles Signed Up for Summer Reading Program	0	527 (+29%)	407 (+347%)	91 (-87%)	711 (-5%)	747 (-35%)	1,153 (+19%)
Young Adults Signed up for Summer Reading Program	0	336 (+336%)	77 (+166%)	29 (-78%)	134 (-65%)	378 (-2%)	385 (+241%)
Adults Signed Up for Summer Reading Program	0	145 (+19%)	122 (+270%)	33 (-79%)	159 (-36%)	248 (+112%)	117 (+36%)
<b>TOTAL Summer Reading Program Signups</b>	<b>0</b>	<b>1,008 (+66%)</b>	<b>606 (+296%)</b>	<b>153 (-85%)</b>	<b>1,004 (-27%)</b>	<b>1,373 (-17%)</b>	<b>1,655 (+42%)</b>

## Summer Reading Program Completions

August 2022

	BDL Monthly Total	BDL YTD	BDL Year End (Year-over-Year Change)				
			2021	2020	2019	2018	2017
Juveniles who Completed Summer Reading Program	0	355 (+61%)	220 (+142%)	91 (-76%)	385 (+48%)	260 (-50%)	518 (+13%)
Young Adults who Completed Summer Reading Program	0	50 (+32%)	38 (+31%)	29 (-63%)	79 (-41%)	135 (-50%)	268 (+332%)
Adults who Completed Summer Reading Program	0	31 (+3%)	30 (-9%)	33 (-72%)	118 (-28%)	165 (+72%)	96 (+60%)
<b>TOTAL Summer Reading Program Completions</b>	<b>0</b>	<b>436 (+51%)</b>	<b>288 (+88%)</b>	<b>153 (-74%)</b>	<b>582 (+4%)</b>	<b>560 (-37%)</b>	<b>882 (+52%)</b>

## Library-Provided Computer Services

August 2022

	BDL Monthly Total	BDL YTD	BDL Year End (Year-over-Year Change)				
			2021	2020	2019	2018	2017
One-hour sessions on Library Wifi	40,136	206,222 (+7%)	290,877 (+2%)	284,892 (-40%)	474,750 (+2%)	465,219 (+9%)	425,714 (+4%)
Desktop, Laptop, and Tablet Computers Available for Public Use	92		92 (+5%)	88	88 (-1%)	89 (+22%)	73
Sessions on Library-Provided Computers	2,257	12,147 (+88%)	11,926 (+24%)	9,604 (-73%)	35,720 (-22%)	45,687 (+3%)	44,181 (+6%)
Hours Library-Provided Computers Used (Tracking Since 2018)	1,557.39	7,773.77 (+105%)	6,735.18 (+12%)	6,031.58 (-75%)	24,280.36 (-2%)	24,701.55	0.00
Desktop, Laptop, and Tablet Computers Available for Staff Use	54		55 (+6%)	52	52 (+4%)	50 (+22%)	41

## Website Stats

August 2022

	BDL Monthly Total	BDL YTD	BDL Year End (Year-over-Year Change)				
			2021	2020	2019	2018	2017
Monthly Website Sessions	3,311	30,350 (-4%)	46,481 (+12%)	41,586 (-28%)	58,161 (+28%)	45,594 (-38%)	73,326 (-2%)
Monthly Website Page Views	6,209	57,509 (-34%)	116,164 (+26%)	92,094 (-29%)	129,778 (+9%)	118,634 (-33%)	177,799 (-2%)

## Faxes, Prints, and Sales

August 2022

	BDL Monthly Total	BDL YTD	BDL Year End (Year-over-Year Change)				
			2021	2020	2019	2018	2017
Fax Pages Received	11	164 (+69%)	141 (-5%)	149 (-57%)	350 (-16%)	419 (+61%)	260 (+19%)
Fax Pages Sent	488	4,577 (+15%)	6,515 (+66%)	3,935 (-59%)	9,524 (+3%)	9,249 (+138%)	3,879 (+123%)
Free Prints for Job Seekers, Students, etc.	609	8,814 (+673%)	3,222 (+195%)	1,091 (-61%)	2,796 (-23%)	3,631 (+16%)	3,128 (+9%)
Black and White Patron Prints (Tracking Since 6/2016)	5,759	38,703 (+9%)	55,206 (+66%)	33,177 (-56%)	75,818 (-6%)	81,016 (+7%)	75,606 (+113%)
Color Patron Prints (Tracking Since 6/2016)	1,140	5,774 (+4%)	9,731 (+107%)	4,709 (-58%)	11,299 (-8%)	12,285 (+20%)	10,253 (+154%)
Flash Drives Sold (Tracking Since 6/2016)	0	21 (+110%)	16 (-11%)	18 (-51%)	37 (-10%)	41 (-27%)	56 (+4%)
Earbuds Sold (Tracking Since 6/2016)	14	94 (+3%)	122 (-7%)	131 (-72%)	462 (-14%)	538 (+29%)	416 (+151%)

## Fines and Fees

Overdue Fines Dropped in 2017

August 2022

	BDL Monthly Total	BDL YTD	BDL Year End (Year-over-Year Change)				
			2021	2020	2019	2018	2017
Fines and Fees Payments Received	\$ 55.72	\$ 1,050.11 (-1%)	\$ 1,409.59 (-18%)	\$ 1,717.01 (-44%)	\$ 3,092.62 (+28%)	\$ 2,412.73 (-68%)	\$ 7,628.31 (-24%)
Outstanding Fines and Fees	\$ 13,629.65		8,576.40 (-84%)	53,362.56 (-4%)	55,588.42 (0%)	55,850.27 (-34%)	84,232.33 (-63%)

## Debt Collections

Unique Management Services, Inc.  
Tracking Since 2014

August 2022

	BDL Monthly Total	BDL YTD	BDL Year End (Year-over-Year Change)				
			2021	2020	2019	2018	2017
Fine Payments as a Result of Collection Agency's Efforts	\$ 0.00	\$ 0.00	\$ 0.00	\$ 0.00	\$ 268.00 (-94%)	\$ 4,183.45 (+1,727%)	\$ 229.00 (-76%)
Library Materials Returned as a Result of Collection Agency's Efforts	\$ 0.00	\$ 0.00	\$ 0.00	\$ 0.00	\$ 0.00	\$ 462.00 (-48%)	\$ 888.95 (-33%)
What We Paid Collection Agency for Their Services	\$ 0.00	\$ 0.00	\$ 0.00	\$ 0.00	\$ 134.10 (-75%)	\$ 528.66 (-5%)	\$ 558.08 (-45%)



## Value to Our Service Area

Visit <https://www.BranchDistrictLibrary.org/value>  
to learn how we determine these numbers.

August 2022

	BDL Monthly Total	BDL YTD	BDL Year End (Year-over-Year Change)				
			2021	2020	2019	2018	2017
Value from Physical Item Checkouts	\$ 113,311.40	\$ 874,984.67 (+29%)	\$ 1,048,840.66 (+27%)	\$ 822,979.52 (-53%)	\$ 1,755,554.08 (-7%)	\$ 1,888,907.75 (-12%)	\$ 2,135,671.28 (+0%)
Value from Attending Programs (Tracking Since 1/2018)	\$ 6,146.00	\$ 81,459.00 (+40%)	\$ 78,390.00 (-38%)	\$ 126,690.00 (+7%)	\$ 118,485.00 (-6%)	\$ 125,795.00	\$ 0.00
Value from Fax Service (Tracking Since 1/2018)	\$ 499.00	\$ 4,444.00 (+9%)	\$ 6,534.00 (+61%)	\$ 4,056.00 (-60%)	\$ 10,205.00 (+6%)	\$ 9,668.00	\$ 0.00
Value from Free Prints (Tracking Since 1/2018)	\$ 91	\$ 1,179 (+597%)	\$ 443 (+173%)	\$ 163 (-61%)	\$ 419 (-23%)	\$ 545	\$ 0
Value from Notary Services (Tracking Since 1/2018)	\$ 80.00	\$ 400.00 (+90%)	\$ 320.00 (+42%)	\$ 225.00 (-53%)	\$ 475.00 (+44%)	\$ 330.00	\$ 0.00
Value from Digital Services (Tracking Since 1/2018)	\$ 13,310.00	\$ 108,085.00 (+9%)	\$ 145,136.00 (+5%)	\$ 138,316.00 (+2%)	\$ 135,824.00 (+7%)	\$ 127,476.00	\$ 0.00
Value from Using Library Computers (Tracking Since 1/2018)	\$ 4,672.17	\$ 23,321.31 (+105%)	\$ 20,205.54 (+12%)	\$ 18,094.74 (-75%)	\$ 72,841.08 (-2%)	\$ 74,104.66	\$ 0.00
Value from Using Library Wifi (Tracking Since 1/2018)	\$ 4,013.60	\$ 18,772.20 (+59%)	\$ 17,897.18 (-10%)	\$ 19,942.44 (-40%)	\$ 33,232.50 (+2%)	\$ 32,565.33	\$ 0.00
<b>TOTAL Value of Free Library Services</b>	<b>\$ 142,123.52</b>	<b>\$ 1,112,645.03 (+29%)</b>	<b>\$ 1,317,766.78 (+17%)</b>	<b>\$ 1,130,466.45 (-47%)</b>	<b>\$ 2,127,036.06 (-6%)</b>	<b>\$ 2,259,391.39 (+6%)</b>	<b>\$ 2,135,671.28 (+0%)</b>

## Materials Expenditures

Tracking since 2018

August 2022

	BDL Monthly Total	BDL YTD	BDL Year End (Year-over-Year Change)				
			2021	2020	2019	2018	2017
Amount Spent on Books	\$ 26,176.24	\$ 80,366.97 (+12%)	\$ 108,851.89 (+27%)	\$ 85,727.68 (+12%)	\$ 76,878.30 (-18%)	\$ 93,763.50	\$ 0.00
Amount Spent on Periodicals	\$ 31.50	\$ -593.67 (-213%)	\$ 5,051.01 (-6%)	\$ 5,390.61 (-5%)	\$ 5,663.99 (-20%)	\$ 7,085.59	\$ 0.00
Amount Spent on Audiovisual Materials	\$ 2,266.60	\$ 8,346.03 (-17%)	\$ 23,646.40 (+39%)	\$ 16,992.04 (+13%)	\$ 15,009.96 (-17%)	\$ 17,998.47	\$ 0.00
Amount Spent on Digital Resources	\$ 2,290.12	\$ 30,869.38 (+36%)	\$ 42,439.73 (+34%)	\$ 31,708.66 (+12%)	\$ 28,412.62 (-35%)	\$ 43,798.90	\$ 0.00
<b>TOTAL Spent on All Library Materials</b>	<b>\$ 30,764.46</b>	<b>\$ 118,988.71 (+13%)</b>	<b>\$ 179,989.03 (+29%)</b>	<b>\$ 139,818.99 (+11%)</b>	<b>\$ 125,964.87 (-23%)</b>	<b>\$ 162,646.46</b>	<b>\$ 0.00</b>

## Other Expenditures

Tracking since 2018

August 2022

	BDL Monthly Total	BDL YTD	BDL Year End (Year-over-Year Change)				
			2021	2020	2019	2018	2017
Total Materials Expenditures	\$ 30,764.46	\$ 118,988.71 (+13%)	\$ 179,989.03 (+29%)	\$ 139,818.99 (+11%)	\$ 125,964.87 (-23%)	\$ 162,646.46	\$ 0.00
Total Staff Expenditures	\$ 80,711.23	\$ 728,863.11 (+13%)	\$ 963,961.23 (+1%)	\$ 956,326.38 (-18%)	\$ 1,172,756.92 (-20%)	\$ 1,469,560.33	\$ 0.00
Expenditures in other categories	\$ 79,445.12	\$ 819,788.19 (+41%)	\$ 860,839.79 (+78%)	\$ 483,894.79 (+37%)	\$ 353,231.25 (-16%)	\$ 422,747.74	\$ 0.00
<b>TOTAL Expenditures in all Categories</b>	<b>\$ 160,156.35</b>	<b>\$ 1,536,670.15 (+21%)</b>	<b>\$ 1,865,487.82 (+3%)</b>	<b>\$ 1,819,492.24 (+1%)</b>	<b>\$ 1,797,240.67 (-13%)</b>	<b>\$ 2,054,954.53</b>	<b>\$ 0.00</b>

## Staffing

August 2022

	BDL Monthly Total	BDL YTD	BDL Year End (Year-over-Year Change)				
			2021	2020	2019	2018	2017
Total BDL Staff	38	37 (avg) (+6%)	35 (avg) (-3%)	36 (avg) (-3%)	37 (avg) (-8%)	40 (avg) (+5%)	37 (avg) (+9%)
BDL Staff with MLS Degree	5	5 (avg)	5 (avg)	5 (avg) (+25%)	5 (avg) (-33%)	6 (avg) (+20%)	5 (avg) (+150%)
Worked Full-Time Equivalents	24.19	23.65 (avg) (+5%)	21.71 (avg) (-13%)	24.53 (avg) (-4%)	25.78 (avg) (-4%)	26.92 (avg) (+8%)	24.91 (avg) (+41%)
Hours of Specialized Training for Staff (Tracking Since 1/2019)	7	352 (-18%)	763 (-35%)	1,170 (+119%)	534	0	0
Hours Volunteers Worked at the Library (Tracking Since 1/2019)	2	153 (+125%)	128 (+228%)	39 (-96%)	1,065	0	0

## Outreach Services

Began 2018

August 2022

	BDL Monthly Total	BDL YTD	BDL Year End (Year-over-Year Change)				
			2021	2020	2019	2018	2017
Number of Patrons Served by Outreach Services	5	77 (-20%)	120 (+186%)	42 (-40%)	70 (-8%)	76 (+2,433%)	3
Number of Items Delivered to Outreach Patrons	52	325 (-25%)	548 (+126%)	242 (+10%)	220 (-64%)	606 (+2,231%)	26

## Coldwater Branch Heritage Room

Stats part of Coldwater Branch totals above; shown here for convenience.

August 2022

	Heritage Room	BDL YTD	BDL Year End (Year-over-Year Change)				
			2021	2020	2019	2018	2017
Heritage Room Attendance	63	276 (+138%)	202 (+92%)	105 (-78%)	484 (-34%)	736 (+12%)	658 (-7%)
In-Person Reference Questions	15	101 (+494%)	74 (-8%)	80 (-81%)	412 (-42%)	708 (+29%)	550 (+664%)
Reference Telephone Calls	13	83 (+4%)	115 (+92%)	60 (-74%)	232 (-16%)	277 (-36%)	433 (+15%)
Online Reference Questions	9	17 (-37%)	42 (+24%)	34 (-48%)	65 (+8%)	60 (-5%)	63 (-24%)

## Coldwater Branch Kids' Place

Stats part of Coldwater Branch totals above; shown here for convenience.

Tracking separately since April 2019.

August 2022

	Kids' Place	BDL YTD	BDL Year End (Year-over-Year Change)				
			2021	2020	2019	2018	2017
Kids' Place Attendance	985	4,233 (+66%)	4,445 (+86%)	2,385 (-75%)	9,710	0	0
In-Person Reference Questions	150	1,054 (+102%)	740 (+227%)	226 (-61%)	575	0	0
Reference Telephone Calls	16	107 (-39%)	214 (+37%)	156 (-30%)	224	0	0
Online Reference Questions	0	0	2	0	0	0	0

## Coldwater Branch Teen Space

Stats part of Coldwater Branch totals above; shown here for convenience.

Tracking separately since April 2019.

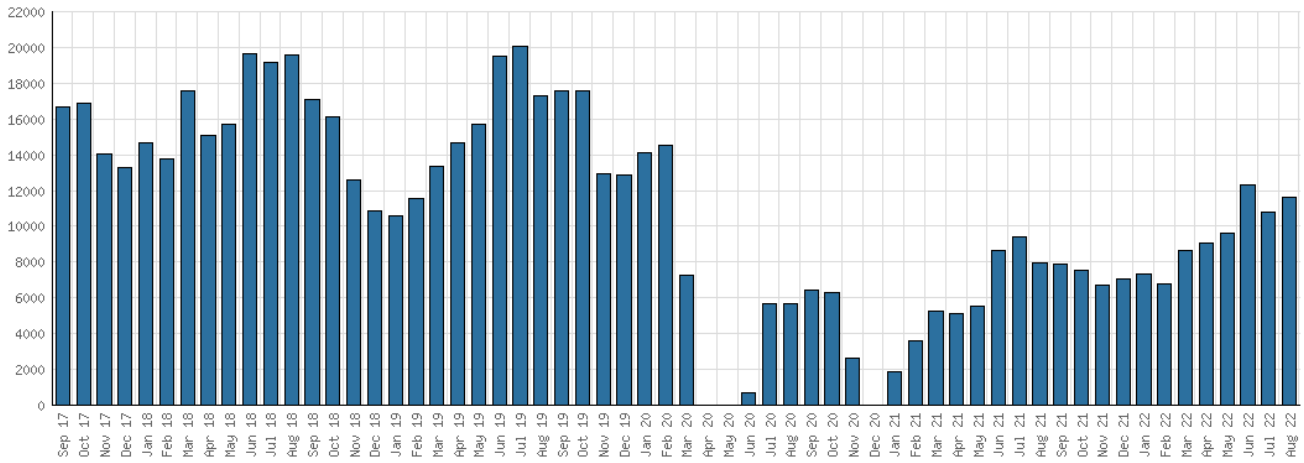
August 2022

	Teen Space	BDL YTD	BDL Year End (Year-over-Year Change)				
			2021	2020	2019	2018	2017
Teen Space Attendance	125	787 (+36%)	706 (-16%)	845 (-80%)	4,172	0	0
In-Person Reference Questions	8	59 (+490%)	13 (+225%)	4 (-96%)	93	0	0
Reference Telephone Calls	0	0	0	0	0	0	0
Online Reference Questions	0	0	0	0	0	0	0

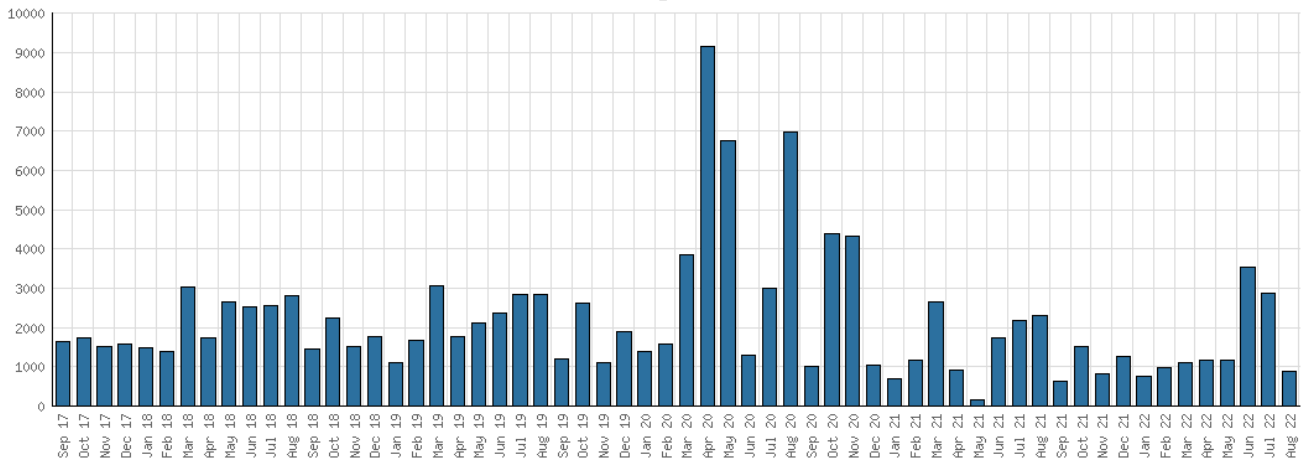
# Selected Graphs

5-year Monthly Trends

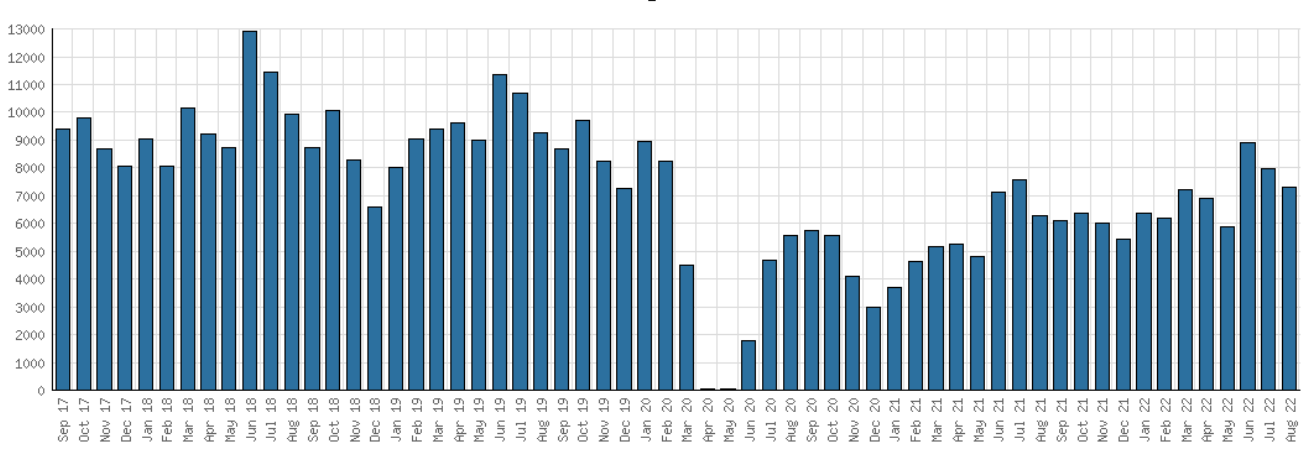
### District Attendance



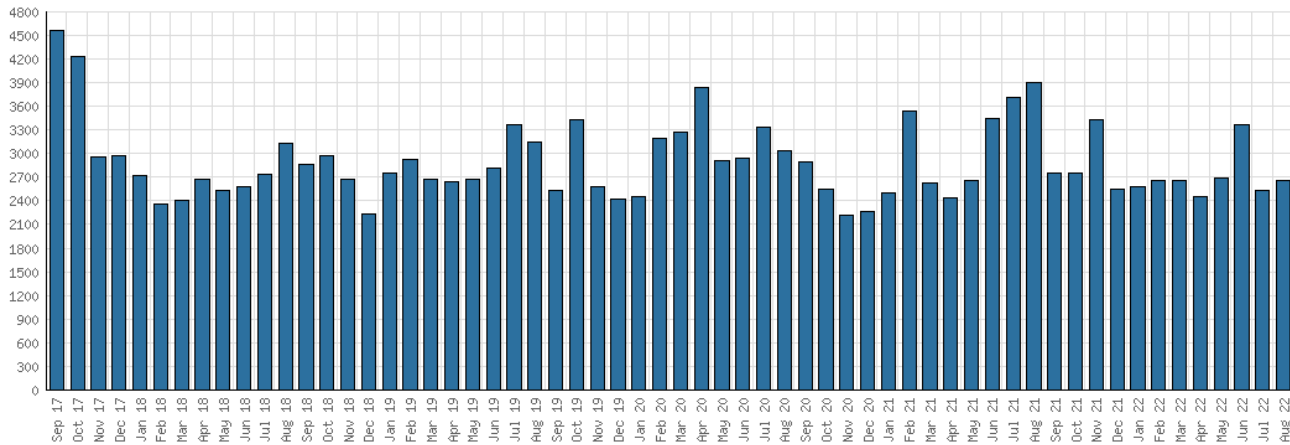
### District Program Attendance



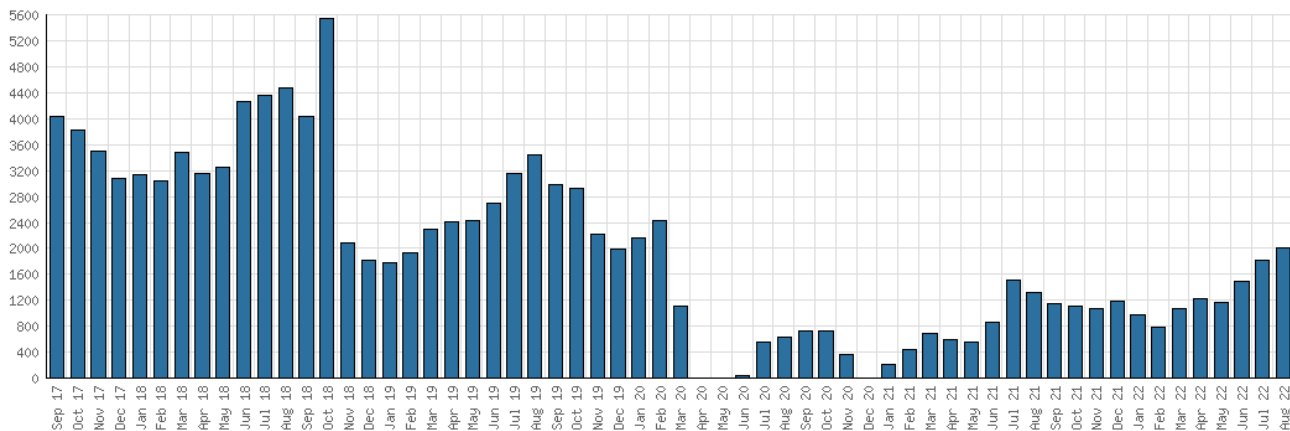
### District Physical Checkouts



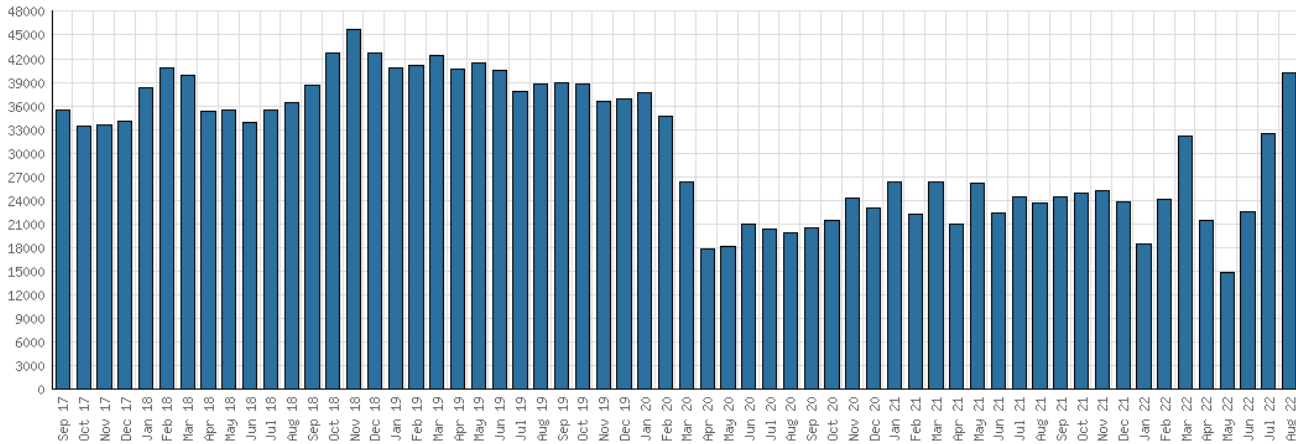
District Digital Usage



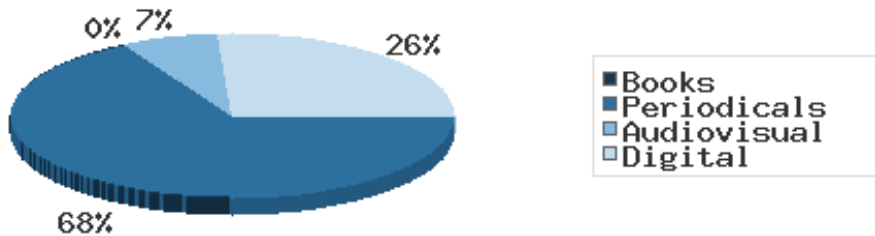
District Use of Library-Provided Computers



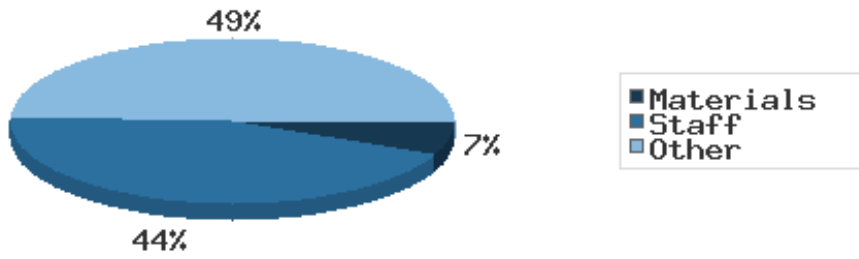
District One-Hour Sessions on Library Wifi



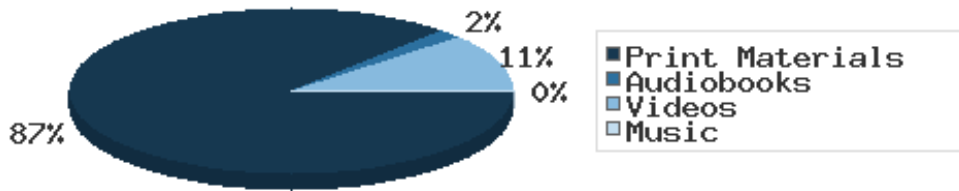
Year-to-Date Materials Expenditures



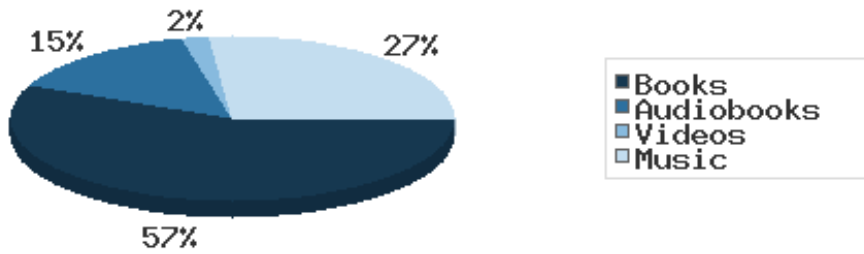
### YTD Expenditures in all Categories



### Physical Collection



### Digital Collection



### YTD Usage Breakdown of Digital Services

